

# VENDORS WANTED

HEARTLAND MODEL CAR NATIONALS #31  
SWAP MEET ON

**SUNDAY, JUNE 11<sup>th</sup>, 2023**

Vendors and merchants of model car kits, collectable automobilia, promos, diecast cars, and related aftermarket and cottage industry products: come and join us in our Model Car Expo! Eight-foot vendor tables are only \$30.00 each if reserved and payment made by April 1<sup>st</sup>, 2023. (\$35.00 per table is charged after April 1<sup>st</sup>, 2023.)

Company \_\_\_\_\_

Contact Person \_\_\_\_\_

Address \_\_\_\_\_

City, State, Zip \_\_\_\_\_

Phone \_\_\_\_\_

email \_\_\_\_\_

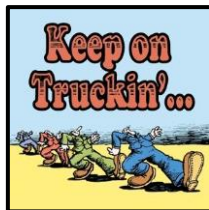
No. of tables \_\_\_\_\_ x \$30.00 = \_\_\_\_\_

**VENDORS ONLY** set-up begins at 6:00 AM Sunday, June 11<sup>th</sup> 2023. Use the NW door inside the covered parking area. Make your checks payable to the **Kansas City Slammers** and mail your paid table reservations no later than May 15<sup>th</sup>, 2023, to:

KANSAS CITY SLAMMERS  
C/O ROBERT PERILLO  
209 CONTI COURT  
BELTON, MO 64012

Information is subject to  
change before June 2023.

Please check our website for updates.



# 2023 HEARTLAND NATIONALS #31

PRESENTED BY THE:

## KC SLAMMERS MODEL CAR CLUB



ENTHUSIASTS OF AUTOMOBILES IN SCALE

### SCHEDULE OF EVENTS:

**SATURDAY, JUNE 10<sup>th</sup>, 2023**

CONTEST REGISTRATION INFO:

**ADMISSION FOR MODEL CONTESTANTS**

Juniors (16 & Under) Free.

Adult contestants (17 and older)—Admission is \$15.00 which includes contest registration to enter five models and Sunday admission. If entering more than five models the price is \$2.00 each per additional model. For example, 15 models entered would cost a total of \$35.00.

Enter models from 2:00 pm until 7:00 pm.

Complete registration of models and place in appropriate class.

From 7:00 pm Sat. until 9:00 am Sun.

Closed to Vendors, Entrants and Public for models to be judged and photographed.

**SUNDAY, JUNE 11<sup>th</sup>, 2023**

**GENERAL ADMISSION**

**(non-contestants) is \$8.00 per person.**

**SWAP MEET & MODEL DISPLAY**

General Admission includes Swap Meet.

Show and Swap Meet begins at 9:00 am.

No Early Bird!

Awards Presentation begins at 3:00 pm.

*Thanks to all Loyal Heartland Entrants,  
Vendors, Elvis & Fellow Slammers!*

# HEARTLAND MODEL CAR NATIONALS

CONTEST & SWAP MEET

**JUNE 10 & 11**

AT THE

**OVERLAND PARK**

**CONVENTION CENTER**

**6000 COLLEGE BLVD.**

**OVERLAND PARK, KS**

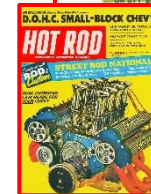
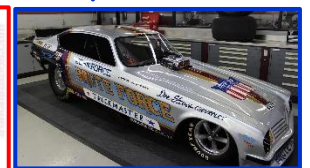
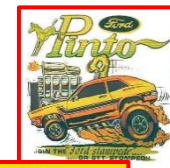
DOOR PRIZES - SHOW PROMOS - OLDIES DJ

**AWARDS FOR EVERY CLASS**

**PLUS MASTER AWARDS**

**SPECIAL THEME AWARD FOR:**

*THOSE CARS of the '70s*



Contest Info: **Bill Barker**

913-702-4162 [wlb19@yahoo.com](mailto:wlb19@yahoo.com)

Vendor Info: **Robert Perillo** 816-824-8585

[umberto659@yahoo.com](mailto:umberto659@yahoo.com)

Web Site - [www.kcslammers.com](http://www.kcslammers.com)

## 2023 HEARTLAND #31 - CONTEST CLASSES

**Diecast, Resin, White Metal & Plastic models are allowed in ALL classes, without exception.**

### **JUNIOR OPEN CLASS (Russ Johnson Award)**

For ages sixteen and younger. Open to any style of motor vehicle of any scale. All work on the model must be done by the entrant.

### **ADULT / CHILD (Russ Johnson Award)**

A joint project between an adult and a child age twelve or under. The child must be responsible for at least half of the finishing and construction work. Open to any style of motor vehicle of any scale.

### **ADULT CLASSES:**

For ages seventeen through infinity. Entrants from younger age groups may compete in the adult classes, if they desire. **All work must be done by the entrant. All classes are for 1/24-25<sup>th</sup> scale models, unless otherwise noted.**

**1. Out of Box...**Built from kit parts only. No parts swapping or aftermarket allowed. Paint, foil, decals & flocking are allowed. Filler may be used to correct "sink marks" or other manufacturing flaws. **Kit instructions must be displayed with entry.**

**2. Modified Out of Box...**Built to follow Out of Box rules; however, parts from any other kit may be used if unmodified and documented. No aftermarket parts allowed. **The base kit's instruction sheet and a list of swapped parts must be displayed with entry.**

**3. Showroom Stock (Leonard Poppe Award)** factory vehicles as they were when new. Paint, upholstery, body trim, & all other details must replicate stock items. Factory available options are OK. **Documentation, such as dealer brochures, magazine articles, etc. (copies are OK) MUST be displayed with entry.**

**4. Street Rod (Lee Bush Award)** Production vehicles 1948 and earlier that display a stock or nearly stock production body with modified or enhanced engine, chassis, and interior, **OR** newer non-production vehicles built in the street rod style, in the manner of Foote, Coddington, Brizio, et al. Billet & IFS allowed.

**5. Nostalgia Rod...**Vehicles 1948 and earlier which display a stock or nearly stock production body with modified or enhanced engine, chassis and interior in the manner of traditionally home-built hot rods. No billet, no IFS.

**6. Street Machine...**Vehicles from 1949 and later which display a stock or nearly stock production body with modified or enhanced engine, chassis, and interior features.

**7. Mild Custom...**Vehicles from any year or era with minor custom changes such as frenched headlights, trim removal, rolled pans, different taillights or bumpers, bolt-

on fender skirts, etc. NO MAJOR body or panel modifications except mild chopped tops resulting in a minimum window height of at least 3/8".

**8. Radical Custom...** Vehicles from any year or era exhibiting AT LEAST TWO OF THE FOLLOWING MAJOR CHANGES: chopped top (any amount), sectioning, shortening, stretching, channeling, molded-in fins, reshaping or replacing major body panels.

**9. Lowrider...**Vehicles with paint, interiors, chassis, etc. to replicate a lowrider. No working dance/hop models.

**10. Tuner...**Any American or Foreign vehicle with 4- or 6-cylinder motor built to replicate the latest "Tuner" style.

**11. Straight-Line Drag...**1980 and later straight-line competition vehicles equipped with open, lift-off or flip-top bodies or quarter panels. Includes dragsters, funny cars, pro stock, pro mod and exhibition cars.

**12. Nostalgia Drag...**Drag vehicles using pre-1980 body styles and design, although with possibly newer safety equipment. Includes front engine dragsters, gassers, altered wheelbase cars, funny cars, roadsters, etc.

**13. Utility Vehicle...**Any all-terrain vehicle, Sport utility vehicle, Pickup, 4-wheel drive, Jeep, Van or Sedan Delivery without commercial markings.

**14. Light Commercial...**Service vehicles such as delivery, police, fire & rescue, etc. with 1 ton or less capacity. **Shall** have appropriate markings.

**15. Heavy Commercial...**Service vehicles such as trucking, construction, fire & rescue, etc. with over 1-ton capacity. Should have appropriate markings.

**16. Small Scale...**1/100 to 1/32. No restrictions on type of motor vehicle.

**17. Intermediate Scale...**1/20 to 1/12. No restrictions on type of motor vehicle.

**18. Large Scale...**Larger than 1/12. No restrictions on type of motor vehicle.

**19. Pro Street...**Competition inspired but street legal vehicles modeled in the pro street style.

**20. Curbside...**Model which does not employ an opening hood, doors, or trunk, and is not meant to display engine or chassis detail. Judged as if parked without access to the underside. Any vehicle.

**21. Slammer...**Model which does not employ an opening hood, doors, or trunk, and the interior is fully enclosed by a top and blacked-out windows. Judged for visual impact only. Any vehicle.

**22. Diorama (Dan & Monica Cozine Award)...**A scene or display that depicts a specific moment in time or tells a story. Any operational elements needing electricity must be powered by batteries located within or near the entry. For dioramas over 2 ft. in dimension, make arrangements with the contest organizers.

**23. Motorcycle...** 2- or 3-wheeled vehicles **ANY SCALE.**

**24. Open Wheel Racing...**ANY open- wheeled racing car, including land speed cars—except drag racing. **ANY SCALE.**

**25. Closed Fender Racing...**ANY closed fender racing car, including land speed cars and NASCAR – except drag racing. **ANY SCALE.**

**26. Miscellaneous...**Any non-military vehicle that does not fit into any other class. **ANY SCALE.**

**27. Works in Progress...**Any type/scale of model in progress that isn't more than 75% complete.

**28. Military (automotive related)...**any non-track, automotive-style vehicle used by any military force from any nation. **ANY SCALE.**

**29. Slot Car...**Any 4-wheeled vehicle (2- or 4-wheel drive) outfitted with functional slot car features allowing it to be "driven" on a slot car track or dragstrip. Details specifically associated with a "Slot Car" (motor, frame, etc.) will **NOT** be considered during judging. Can be built as Curbside (with interior) or Slammer (no interior). Out-of-box, commercially available, or "Thingie" slot cars, are **NOT** allowed.

## MASTER AWARDS

Best Drag (Glue Brothers)    Best Engine    Best Detail  
Best Paint    Best Interior (Don Goodman Award)  
People's Choice    Best Ford    Best MOPAR (K. Barns Award)  
Best Chevy    Best Foreign    Best Presentation  
Long Distance Award    Theme – "Those Cars of the '70s"  
Best of the Rest    Titus-Kendrick Concept Design  
HEARTLAND NATIONALS CHAMPION  
(Clyde Young Award)

## CONTEST RULES & TIPS

**All contest models must be the product of the entrant's own craftsmanship.** Judges cannot be expected to be familiar with every kit or vehicle produced. Provide any information you can about your model to ensure those things are not overlooked. The best thing you can do is print a listing of what you did to the model & how you did it. List kits, parts used, techniques, modifications, and noteworthy details. This applies to all classes. A 4x6 note card is good, or use the space on the registration slip.

Models may be picked up by the judges for closer inspection. If your model needs special handling, note it on the entry form and contact an event Judge.

**There will be no class "sweeps," which means that no one person can take 1<sup>st</sup>, 2<sup>nd</sup>, and 3<sup>rd</sup> places in any one class. Also, no repeat 1<sup>st</sup> place winning models from previous Heartland Shows.**

***"Those Cars of the '70s" THEME – Any Car, Truck, Van or Motorcycle built in 1970 – 1979. GTOs, 442s, Chopper, Pacer, Hornet, Falcon...Stock, Kustom, Drag Racer, Road Racer or Low Rider! Build it as a WILD '70s car with a WILD paint job!***