



## CHISHOLM TRAIL SCALE MODELERS PRESENTS

### TrailCon 2016 Model Expo & Contest

#### Show Theme: Big Screen, Little Screen

To qualify for the theme award, the model must be something from a TV show or a movie.

This will allow all types of models, subjects and figures from cave men to science fiction.

The model must list the movie or TV show where it is from. Figures do not have to have a TV show or movie listed, as many figures are not connected with a particular show or movie, though they can be if the modeler wishes.

#### WE HAVE ADDED TWO NEW CATEGORIES THIS YEAR!

They are: "Picture This" and "Retro Kit, Pre 1975 Tooling", which were themes last year.

"Picture this" requires that the entry have a matching picture to the entry. If the picture is black and white, paint the model in gray scale. If the picture is in color, and the colors have shifted, then the model must be painted to match the color shift.

"Retro Kit, Pre '75 molding is any kit that is built from molds that were made before 1975. Retooled molds are not allowed. The modeler must work with the older molding, and can improve the kit with workmanship and any modifications, scratch built parts, and after market parts they wish.

Memorial Awards: Craig Johnson Armor, and Richard LeGaye Coast Guard (Civil) Aircraft, plus Arlo Schroeder Aircraft

Saturday, 15 October 2016, 9AM to 4PM at Midway Baptist Church, 5135 S Broadway, Wichita, KS

Contest Fees: \$10 (IPMS Members \$8) adults, juniors free for UNLIMITED number of model entries;

#### **MUST SHOW MEMBERSHIP FOR DISCOUNT**

General Admission: FREE

Event schedule: 7am to 9am show/contest/vendor setup

9am to 12pm contest registration & tickets for "Raffles"

12pm to 12:30pm lunch, judges

12:30pm to 3pm judging (contest area to be closed) & "Raffles"

3pm to 4pm awards ceremony

4pm to 5pm show/contest/vendor closes (we must close by 5pm for Sunday church setup)

Raffles for kits: \$1 for 1 ticket & \$5 for 6 tickets

Vendor Tables: \$25 for each table on a first come/first served basis, one additional admission per vendor; badges will be available.

See Vendor Form. Make checks payable to: Chisholm Trail Scale Modelers

Send to: TrailCon 2016, 241 N Valley Stream, Derby, Ks. 67037

Contact Info: Teresa Matlock, President, 316-587-7177, or [teressamatlock@gmail.com](mailto:teressamatlock@gmail.com)

Bob Matlock, Vice President, 316-648-6782, or [winterwolf1951@hotmail.com](mailto:winterwolf1951@hotmail.com)

Kenneth Lamury, Secretary, 316-529-3846, or [lamuryk@att.net](mailto:lamuryk@att.net)



### TrailCon 2016 Categories/Classes – Subject to Change

#### AIRCRAFT (001-030)

- 001. All Aircraft 1/73 & smaller
- 002. Biplanes & Rigged Aircraft, All Scales
- 003. Single engine prop 1/72
- 004. Single engine prop 1/48
- 005. Single engine prop 1/32
- 006. Multi-engine prop 1/72
- 007. Multi-engine prop 1/48
- 008. Multi-engine prop 1/32
- 009. Single engine Jet Aircraft 1/72
- 010. Single engine Jet Aircraft 1/48
- 011. Single engine Jet Aircraft 1/32
- 012. Multi-engine Jet Aircraft 1/72
- 013. Multi-engine Jet Aircraft 1/48
- 014. Multi-engine Jet Aircraft 1/32
- 015. All Aircraft 1/31 & larger
- 016. Rotary winged aircraft
- 017. Civil, Sport, Racing, Airliners
- 018. Conversions, Vacuform & Scratch built
- 019. Out-of-Box; 1/72 & smaller
- 020. Out-of-Box; 1/48 & larger

#### MILITARY/ARMED FORCE VEHICLES (031-050)

- 031. All AFV's, 1/72 & smaller
- 032. All AFV's, 1/48
- 033. AFV's, fully tracked, closed top 1/35, 1945 & earlier
- 034. AFV's, fully tracked, open top, 1/35, 1945 & earlier
- 035. AFV's, fully tracked, closed top, 1/35, 1946 & later
- 036. AFV's, fully tracked, open top, 1/35, 1946 & later
- 037. Soft Skin Vehicles
- 038. Armored Cars/Half-tracks
- 039. Towed Weapons & Missiles
- 040. Conversions & Scratch builds
- 041. Out-of-Box AFV's

#### AUTOMOTIVE (051-070)

- 051. Stock
- 052. Pro-street / Street Machines
- 053. Street Rods & Customs
- 054. Curbside & Slammers
- 055. Pick-ups & Light/Heavy Trucks
- 056. Commercial; Police, Fire & Rescue
- 057. Competition drag/straight line, Open & Closed Wheel
- 058. Motorcycles
- 059. Out-of-Box, All

#### FIGURES (071-090)

- 071. Single, 89mm & smaller
- 072. Single, 90mm & larger
- 073. Vignettes (up to 5 figures)
- 074. Fantasy/Science Fiction/Warhammer
- 075. Busts, All
- 076. Animé & Cartoon
- 077. (Un) Mounted

#### SHIPS (091-110)

- 091. Submarines; 1/401 & smaller
- 092. Submarines; 1/400 & larger
- 093. Surface vessels; 1/401 & smaller
- 094. Surface vessels; 1/400 & larger
- 095. Sail and/or Oar powered ; 1/401 & smaller
- 096. Sail and/or Oar powered ; 1/400 & smaller
- 097. Out-of-Box

#### SPACE-SCIENCE FICTION-FANTASY (111-130)

- 111. Real Rockets & Spacecraft
- 112. Fictitious Rockets & Spacecraft
- 113. Gundams, Robots & Fighting Suits
- 114. Sci-fi & fantasy, all other types
- 115. Out-of-Box

#### JUNIORS/YOUTH (131-150)

- 131. Aircraft
- 132. Military Vehicles
- 133. Civilian Vehicles
- 134. Figures/Creatures
- 135. Ships
- 136. Space/Sci-fi/Fantasy/Warhammer
- 137. Dioramas/Vignettes
- 138. Other Subjects

#### MISCELLANEOUS (151-170)

- 151. Dioramas - Aircraft
- 152. Dioramas - Military
- 153. Dioramas - Automotive
- 154. Dioramas - Ships
- 155. Dioramas - Space/Sci-Fi/Fantasy
- 156. Collections (3 or more related items)
- 157. Group Builds (5 or more related items)
- 158. All others not covered

#### NEW CATEGORIES (2nn)

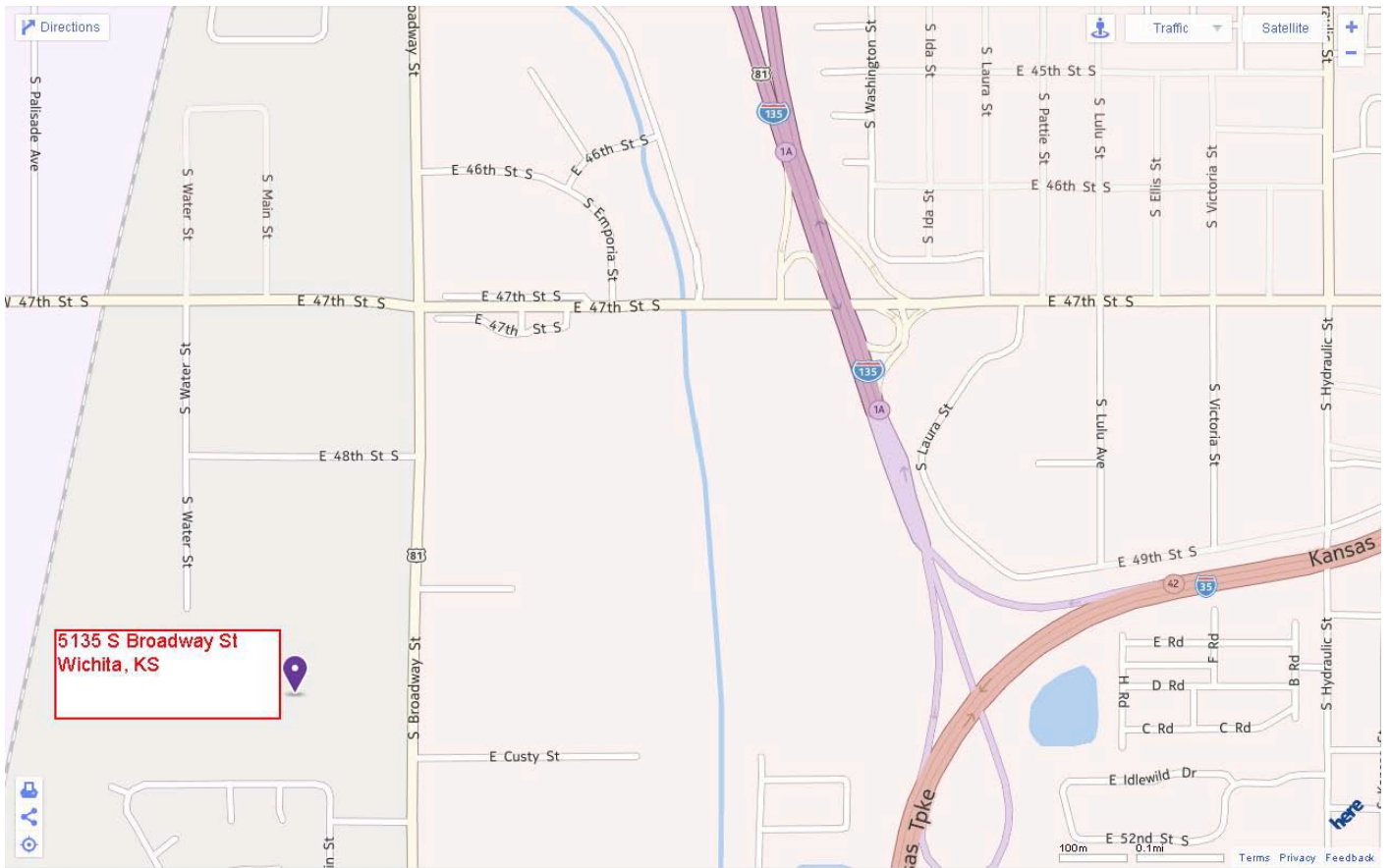
- 201. Picture This
- 202. Retro Kit - Pre-1975 Tooling

#### BEST OF AWARDS

- I) Best Junior
- II) Best Aircraft
- III) Best Armor
- IV) Best Auto
- V) Best Figure
- VI) Best Ship
- VII) Best Space/Sci-Fi
- VIII) Best Diorama
- IX) Best Out-of Box
- X) Best in Show

#### MEMORIAL AWARDS

- XI) Craig Johnson Armor Memorial Award
- XII) Richard LeGaye Coast Guard (Civil) Aircraft Memorial
- XIII) Arlo Schroeder Aircraft Memorial



Award Package Sponsorship is \$35 for any Category/Class (Junior, Aircraft, Armor, Ship, Automobile, Figure, Diorama, etc.). Your choice of Category or Class as is available. See Sponsorship Form. Make checks payable to: Chisholm Trail Scale Modelers. Send to: TrailCon 2016, 241 N Valley Stream, Derby, Ks. 67037